

ROPTEC® Control System

FINAL PRODUCT INSPECTION

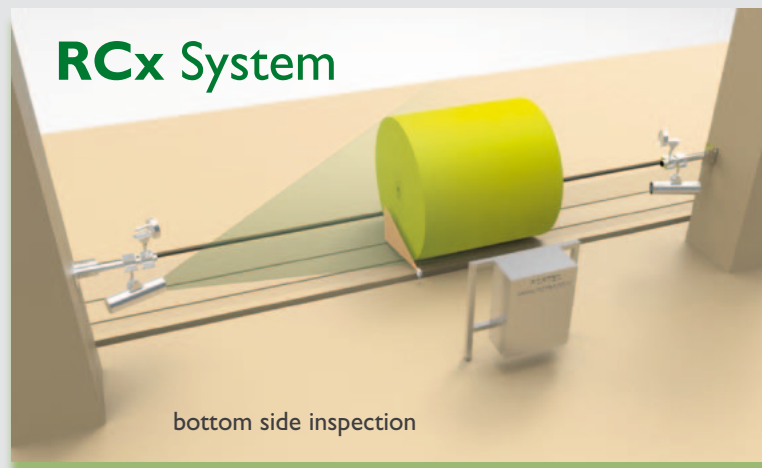
- Camera-based inspection and classification of wrapped paper rolls, pallets and other goods
- On the fly measurement: decision “good-bad” in real time and immediate action

BOOST YOUR YIELD

- Identify and locate bad or missing labels
- Identify goods that need repackaging prior to being stored
- Document and archive your products

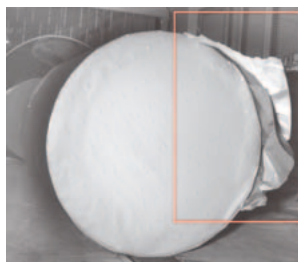
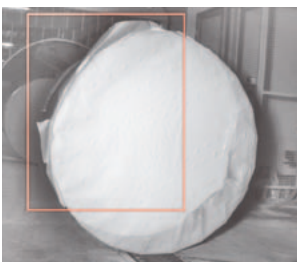
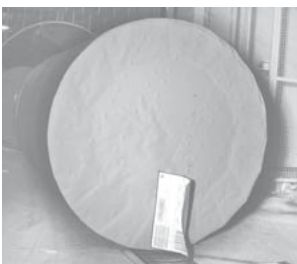
ROPTEC
MACHINE VISION SERVICES & PROJECT MANAGEMENT





The challenge:

Paper industry customers expect perfectly wrapped paper rolls.



The solution:

RCx detects defects of the wrapping on both ends:

- Wrinkles
- Overlapping edges
- Missing or incomplete wrapping

Additionally on the top side:

- Detection of misplaced, loose or missing labels

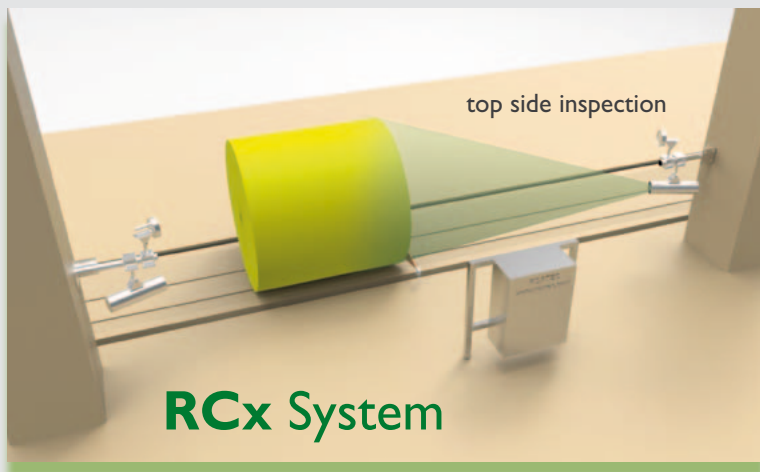
The result:

- Immediate alarm signal on defect detection
- Complete documentation
- Customer complaint reduction
- Analysis of defect images at any time

“ Since we’ve been using the ROPTEC Control System RCx, only perfectly wrapped rolls are sent to the finished goods store. This considerably increases the performance of our storage.”

Customer statement





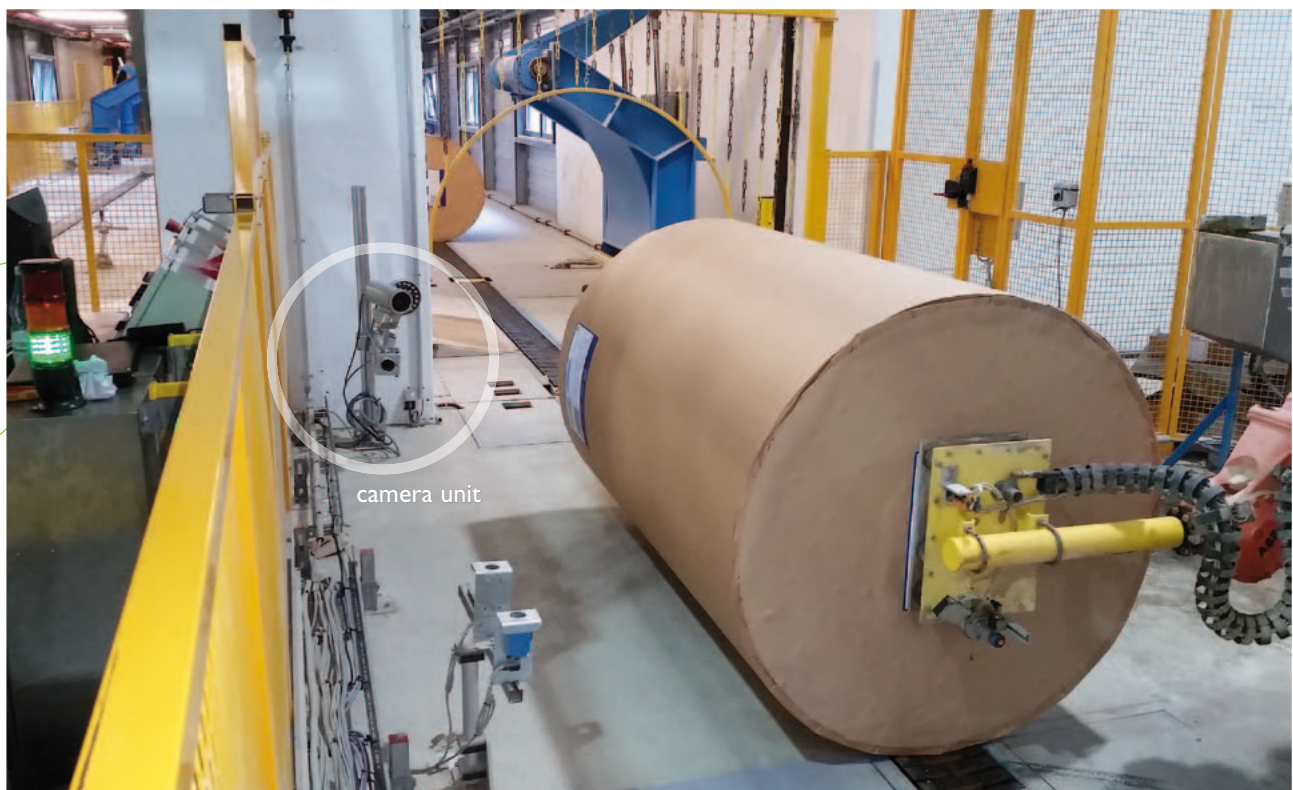
→ Roll Storage

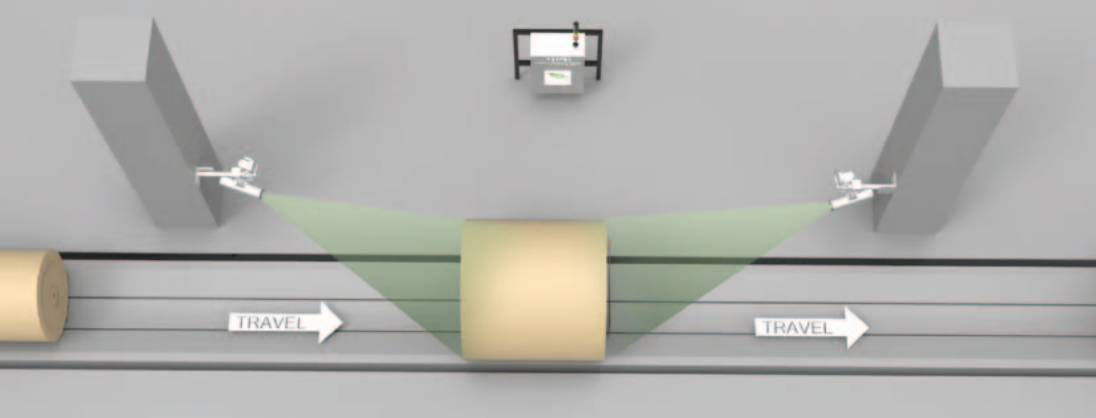
Easy implementation:

- Simple upgrade of existing roll packaging lines
- No extra space necessary, the ROPTEC RCx system is placed downstream of the end labeling unit
- Interface to roll tracking system
- Optional handling of external ID numbers for easy roll tracking

Easy handling:

- Inspection from a safe distance
- Intuitive handling
- Fully-automatic operation, no operator interaction necessary
- Autofocus and automatic light exposure
- No maintenance





The complete system:

Two illumination/inspection camera units, trigger light beam, junction trigger light beam with image processing PC

Specifications:

Type of Products	Wrapped rolls
Product dimensions	Roll length 600 to 3,700 mm Roll diameter 1,000 mm to 1,500 mm
Performance	Up to 4 rolls/min = approx. 240 rolls/h
Cameras	2 x CCD-camera ~2 megapixels Ruggedized stainless steel housing with dust protection
Illumination	LED lights (visible), 2 x WebLED 28 SX from Papertech Inc (Vancouver, Canada) Ruggedized aluminum housing with dust protection
Mounting	Camera mounting at wall with pipes
Computer hardware	Embedded-PC with 32 GB solid state disk, fanless, DIN-rail mounting inside controller junction box measurements <1,000 x1,000 x 300 mm
Archiving of images	locally or at external storage location
Interfaces	Locally ethernet, optional: profibus, serial

Option:

Optical character recognition (OCR) and barcode reader. Technical data is subject to change.

Our philosophy

ROPTEC® designs and delivers solutions for process control and optimization in paper, tissue and cardboard production. The company's main focus areas are the use of optical technologies for the improvement of product quality, the increase of production, and maintenance services.

As the European certified service partner of the Canadian company Papertech Inc, ROPTEC® offers complete project management, from conceptual design and installation up to the final acceptance and after-sales services.

In addition, ROPTEC® locally consults paper industry customers, for example on the upgrade, rebuilding or expansion of existing web break and inspection systems of different manufacturers.

ROPTEC
MACHINE VISION SERVICES & PROJECT MANAGEMENT



ROPTEC® GmbH

Talstrasse 164 - 52249 Eschweiler - Germany - Tel. +49 2403 7498629 - Fax +49 2403 7498623 - info@ropotec.com